



Front/Side Elevation



Front/Side Elevation

### House Type 19

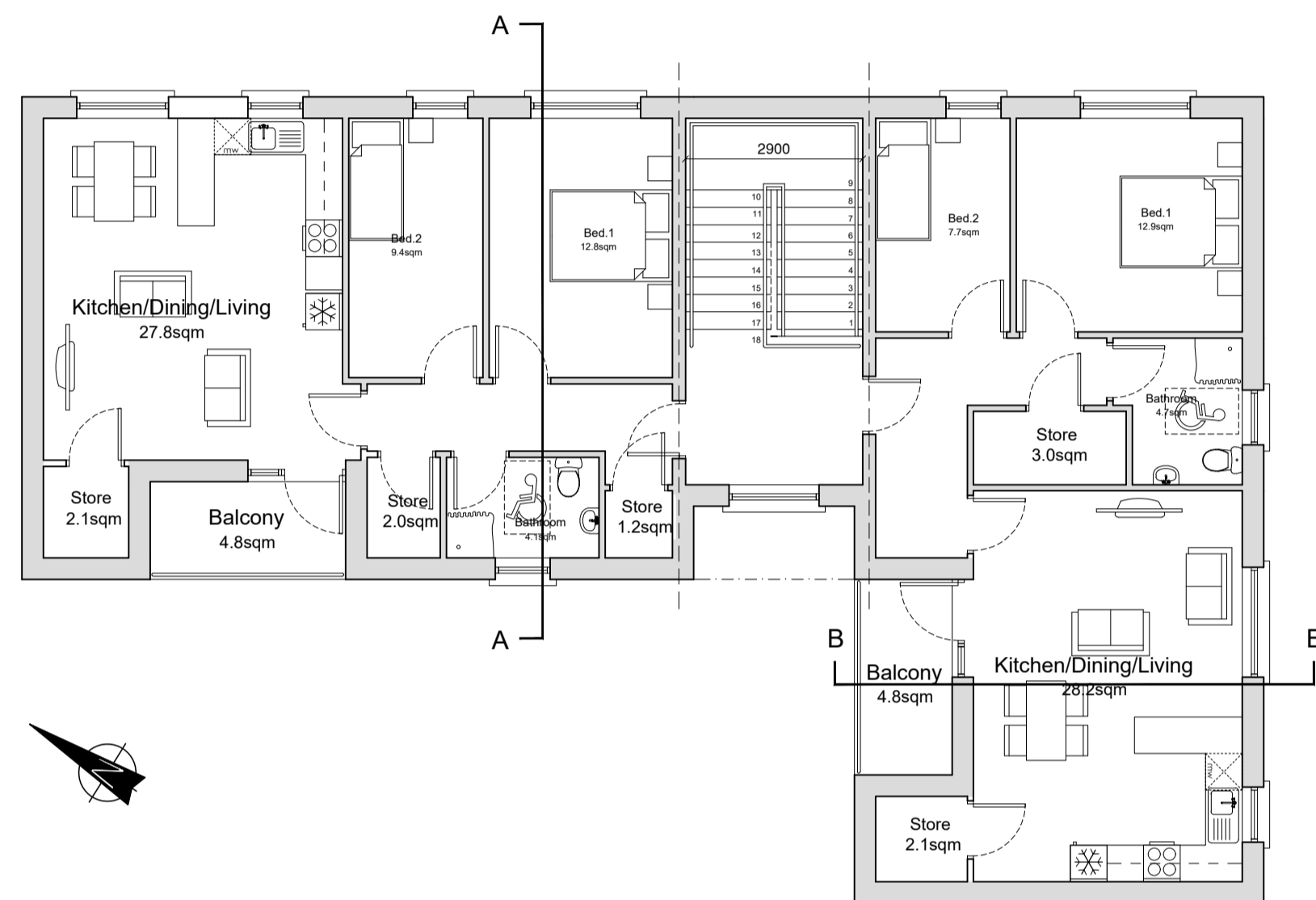
Quality Housing for Sustainable Communities Standards

2 Bedroom / 3 Person (apt) Areas:				
	Target Gross Floor Areas (m <sup>2</sup> )	Aggregate Living Area (m <sup>2</sup> )	Aggregate Bedroom Area (m <sup>2</sup> )	Storage (m <sup>2</sup> )
Required	63 sqm	28sqm	20.1 sqm	5 sqm
Provided	GF 68.0sqm FF 68.0sqm*	GF 28.0sqm FF 28.0sqm	GF 20.1sqm FF 20.1sqm	GF 5.7sqm** FF 5.1sqm

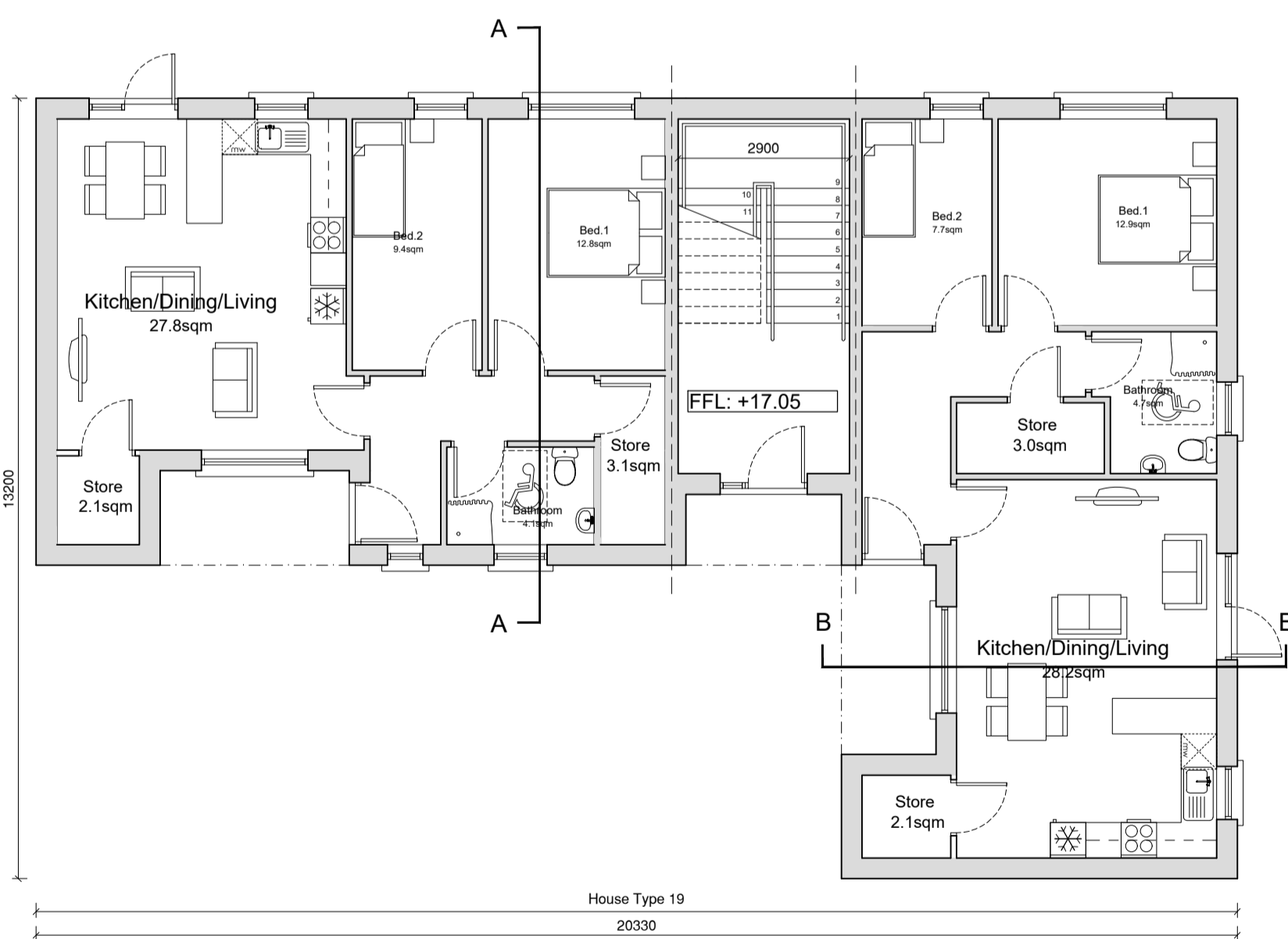
  

2 Bedroom / 3 Person (apt) Widths:					
	Single Bedroom (m)	Double Bedroom (m)	Living Rm [1 Bed] (m)	Living Rm [2 Bed] (m)	Living Rm [3 Bed] (m)
Required	2.1m	2.8m	3.3m	3.6m	3.8m
Provided	GF 2.2m FF 2.2m	GF 3.0m FF 3.5m	-	GF 4.9sqm FF 4.4sqm	-

\*Excluding Stairs  
\*\*Additional Storage in External Shed



First Floor Plan



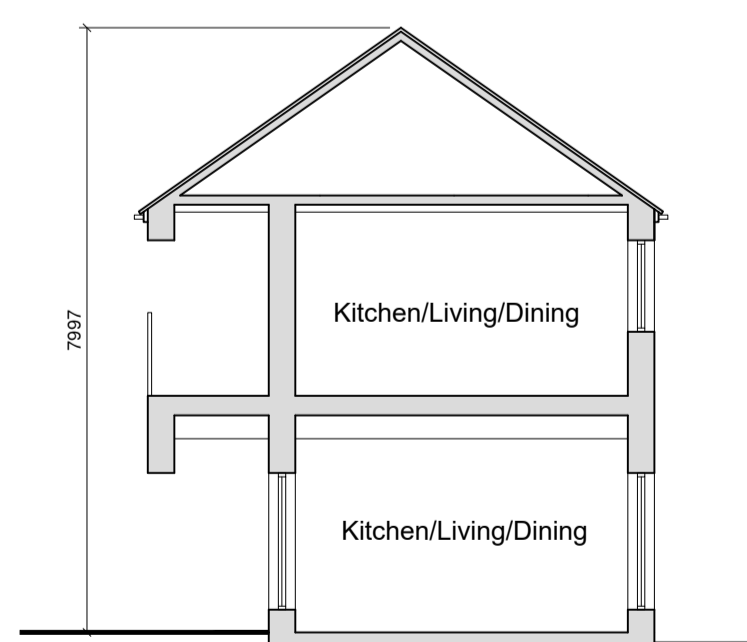
Ground Floor Plan



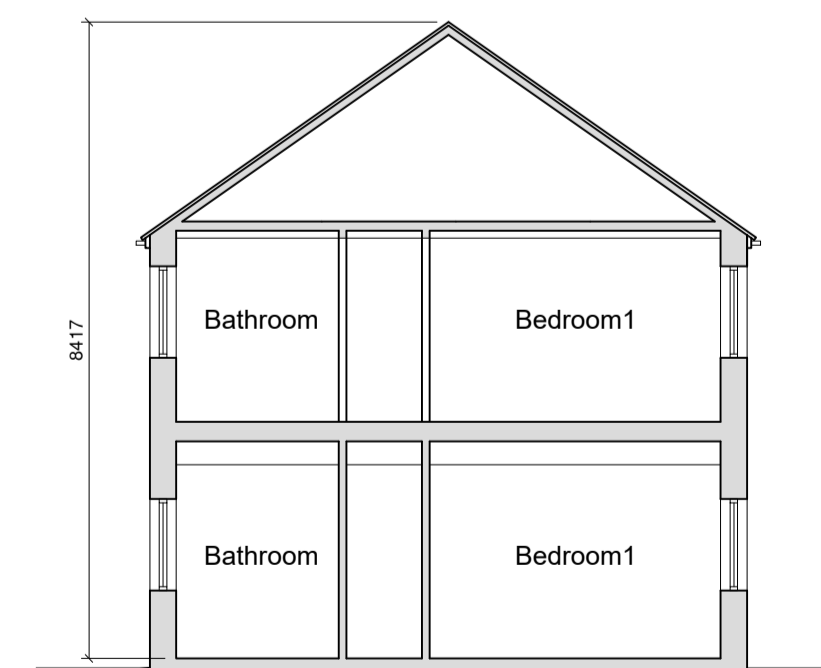
Rear Elevation



Rear Elevation

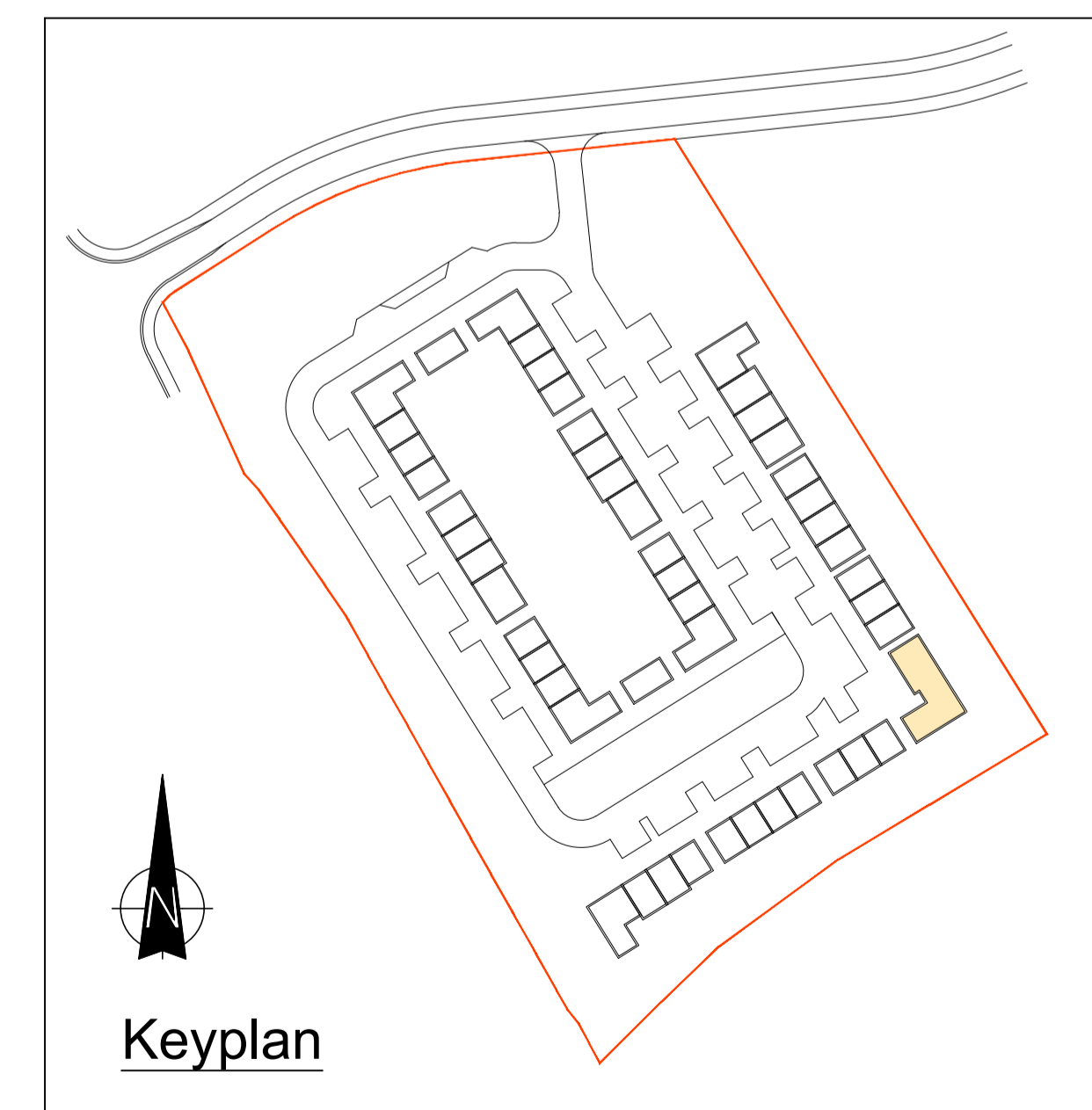


Section B-B



Section A-A

External Finishes Schedule	
Roof:	Blue/Black Fibre cement Slate
Walls:	White External Render - Smooth/dashed Brick detail at Entrances
Windows & Doors:	Grey AluClad
Rain Water Goods:	Black uPVC



Keyplan

REVISION	DATE	DESCRIPTION	BY
-	-	-	-
-	-	-	-
-	-	-	-
-	-	-	-
-	-	-	-
-	-	-	-